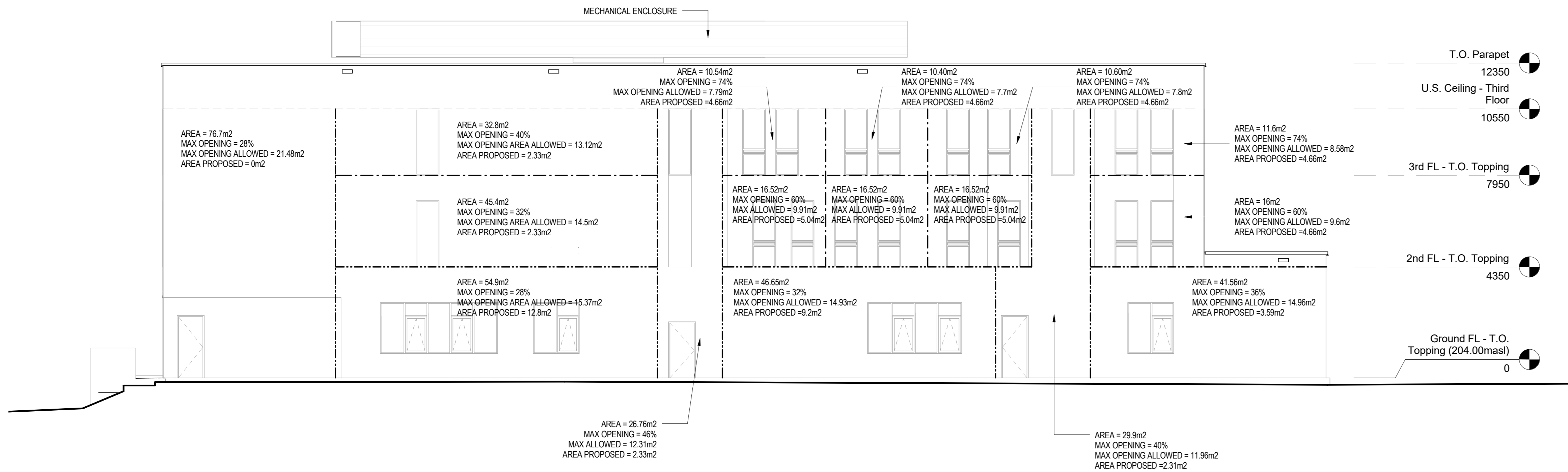




SUBSIDIARY USE TO OCCUPANCIES ABOVE
ASSEMBLY OCCUPANCY
RESIDENTIAL OCCUPANCY
RESIDENTIAL OCCUPANCY



5 Exposing Building Face West Elevation
1:100

OCCUPANT LOAD CALCULATIONS

GROUND FLOOR: A2 Occupancy
 Dining Hall: 70 people (Posted Design Load)
 Office/Reception: 52m² / 9.3 = 9.89 people
 Meeting Rooms: 32m² / 0.55 = 58.21 people
 Community Access Classroom: 33m² / 1.85 = 17.84 people
 Resident Lounge: 70m² / 1.65 = 42.42 people
 Kitchen: 65m² / 1.3 = 50.00 people
 Storage: 6m² / 48 = 0.125 people
Total = 168.33 people

SECOND FLOOR: C Occupancy
 Dormitory: 330m² / 4.5 = 73.33 people
 SRO Units: 8 Units x 1 person/unit = 8 people (Posted Design Load)
 Laundry: 11m² / 4.0 = 2.75 people
Total = 84.08 people

THIRD FLOOR: C Occupancy
 Dormitory: 330m² / 4.5 = 73.33 people
 SRO Units: 7 Units x 1 person/unit = 7 people (Posted Design Load)
 Laundry/Lounge: 18m² / 4.0 = 4.50 people
Total = 80.33 people

BASEMENT FLOOR: Subsidiary Use
 Storage Areas: 651m² / 46 = 14.37 people
Total = 14.37 people

TOTAL BUILDING OCCUPANT LOAD = 266.65 (260 people)

WASHROOM FIXTURE CALCULATIONS

GROUND FLOOR:
 Dining Hall: 70 people (Resident use only) = 3 male wc
 Office/Reception: 5.89 people = 1 wc
 Meeting Rm & Community Access Classroom: 42.05 people = 1 wc male, 2 wc female
 Resident Lounge: Access by residents only - counted in Dining Hall & SRO uses.
 Kitchen: Access by staff only, counted in Office use.
 Storage: 0.1 people = 0 wc
Total Fixture Count = 5 male wc, 2 female wc

SECOND FLOOR:
 Dormitory: 26.26 people (men only) = 3 wc
 SRO Units: 8 Units x 1 fixture/unit = 8 wc
 Laundry: Access by residents & staff only - counted SRO, Dorm & Office uses.
Total Fixture Count = 11 wc

THIRD FLOOR:
 Dormitory: 26.26 people (men only) = 3 wc
 SRO Units: 7 Units x 1 fixture/unit = 7 wc
 Laundry/Lounge: Access by residents & staff only - counted SRO, Dorm & Office uses.
Total Fixture Count = 10 wc

BASEMENT FLOOR:
 Storage Areas: 14.37 people = 1 wc
Total Fixture Count = 1 wc

AREA SCHEDULE (Gross Floor Area)

LEVEL	AREA (m²)
GROUND FLOOR	680 m²
SECOND FLOOR	528 m²
THIRD FLOOR	543 m²
TOTAL	1,751 m²

OBC MATRIX

Name of Project: **BROCK MISSION MEN'S SHELTER**
 Location: **217 MURRAY STREET, PETERBOROUGH, ONTARIO**
 Certificate of Practice Number: 5162

Ontario Building Code Data Matrix part 3 & 9

ITEM	Project Description	Ontario Building Code Data Matrix part 3 & 9	OBC Reference
1	Major Occupancy(s)	Ground Floor: Group A2 Assembly, 2nd-3rd Floor: Group C Residential (Basement: Accessory Use)	3.1.2.1(1), 9.10.2
2	Building Area (m²)	Existing: 680 m², New: 880 m², Total: 1560 m²	14.1.2(A), 14.1.2(A)
3	Gross Area (m²)	Existing: 1,751 m², New: 1,752 m², Total: 3,503 m²	14.1.2(A), 14.1.2(A)
4	Number of Storeys	Above grade: 3, Below grade: 1	14.1.2(A) & 3.2.1.1, 14.1.2(A) & 9.10.4
5	Number of Streets/Access Routes	1	3.2.2.10 & 3.2.5, 9.10.20
6	Building Classification	Ground Floor: 3.2.2.24 Group A, Division 2, up to 6 storeys, Any Area, Sprinklered 2nd-3rd Floor: 3.2.2.45 Group C, up to 3 storeys, Sprinklered	3.2.2.20-83, 9.10.2
7	Sprinkler System Proposed	Entire Building	3.2.2.20-83, 3.2.2.17 index, 9.10.8.2
8	Standpipe Required	Yes	3.2.9, N/A
9	Fire Alarm Required	Yes	3.2.4, 9.10.18
10	Water Service/Supply is Adequate	Yes	3.2.5.7, N/A
11	High Building	Yes	3.2.6, N/A
12	Construction Restrictions	Non-combustible (Both & Ground Fl. per 3.2.2.7)	3.2.2.20-83, 9.10.6
13	Actual Construction	Non-combustible	3.2.1.1(3)-(6), 9.10.4.1
14	Occupant load based on	(EXISTING) Occupancy, n/a, Load, n/a, persons (PROPOSED) 260 persons total Refer to Occupant Load Calculation Schedule A-001 for breakdown	3.1.1.7, 9.9.1.3
15	Barrier-free Design	Yes	3.8, 9.5.2
16	Hazardous Substances	Yes	3.3.1.2(1) & 3.3.1.19, 9.10.1.3(4)
17	Required Fire Resistance Rating (FRR)	Horizontal Assemblies: 1 Hour Ground Floor: 1 Hour 2nd Floor: 1 Hour 3rd Floor: 45 Min. Roof: 9 Hours Mezzanine: n/a FRR of Supporting Members: n/a Ground Floor: 1 Hour 2nd Floor: 1 Hour 3rd Floor: 45 Min. Roof: 9 Hours Mezzanine: n/a	3.2.2.20-83 & 3.2.1.4, 9.10.8, 9.10.9
18	Spatial Separation - Construction of Exterior Walls	3.2.3	9.10.14
19	Other - Describe		

ISSUED FOR TENDER

ISSUE DATE: MARCH 23, 2018

NO.	DATE	DESCRIPTION
7	2018/04/11	ISSUED FOR ADDENDUM #
6	2018/03/23	ISSUED FOR TENDER
5	2018/03/14	ISSUED FOR PERMIT REVISIONS R1
4	2018/03/19	ISSUED FOR PERMIT REVISIONS
3	2017/12/19	ISSUED FOR PERMIT
2	2017/03/22	ISSUED FOR COSTING
1	2016/12/02	ISSUED FOR COORDINATION

PROJECT: BROCK MISSION MEN'S SHELTER
 217 MURRAY STREET, PETERBOROUGH, ONTARIO

DRAWING TITLE: OBC MATRIX AND CODE PLANS

PROJECT NO.: 14276
SCALE: As indicated
DRAWN BY: AJ
REVIEWED BY: JL

DRAWING NO.: A-001