



April 5, 2018

Client: Moffet & Duncan Architects Inc.  
5052 Dundas Street West  
Etobicoke, Ontario  
M9A 1B9

RE: Westmount Public School - Renovations  
Peterborough, Ontario

Job #: 17244

Attn: Mr. Robert Ferkul/Mr. Lubos Sagat

---

## MECHANICAL AND ELECTRICAL ADDENDUM

### MECHANICAL

#### Item 1

1.0 Reference Specification Section 22 44 13

.1 Add Item '2.4' as follows:

"2.4 Wall Hung Lavatory (L-2) Single Handle

.1 Vitreous china, low shelf, with integral back, contoured front, shallow front basin, front overflow, soap depressions, supply openings on 102 mm (4") centres, concealed supports. Sizes: 520 x 460 mm (20½" x 18¼").

Acceptable materials:

American Standard Lucerne

Crane

Koehler

.2 Waste fitting: NPS 32 mm (1 1/4") offset waste with grid strainer.

.3 Trim:

Chrome plated brass, blade handed mixing faucet, mixing spout, washerless, aerator.

Provide accessories to limit flow rate to 2 l/min at 413 kPa (60 psi).

Acceptable materials:

Zurn Z-7440

Crane

Delta"

.2 Add Item '2.8' as follows:

"2.8 Water Closets (WC-2) (Flush Valve)

.1 Floor-mounted, top spud, ultra-low flush, maximum 3.8 litres/flush.

.2 Bowl: vitreous china, siphon jet, elongated rim.

Acceptable materials:

American Standard Madera

Koehler

Crane

.3 Flush valve: exposed, polished chrome, single flush, diaphragm type with NPS 25 mm (1") screwdriver angle stop, oscillating handle, flush connection and coupling for NPS 40 mm (1 1/2") top spud, wall and spud escutcheons, seat bumper, and vacuum breaker. Ultra low flush cycle.

Acceptable materials:

Delta Teck 81T201

Sloan

Zurn

- .4 Seat: black, elongated, open front, molded solid plastic, less cover, stainless steel check hinges, stainless steel or solid brass insert post.  
Acceptable materials:  
Bemis 2155C  
Olsonite  
Centoco”

**Item 2**

- 2.0 Reference Drawing M1.1 and Attached Sketch SKM-1.
- .1 In the Plumbing Fixture Schedule, add watercloset WC-2 and lavatory L-2 as per Sketch SKM-1.
  - .2 Revise Part Plan ‘B’ area on First Floor Key Plan as per Sketch SKM-1.
  - .3 In the Unit Ventilator Schedule, revise UV-101 model to VUV-1200.

**Item 3**

- 3.0 Reference Drawing M1.2 and Attached Sketch SKM-2.
- .1 Existing waterclosets and lavatories in Existing WR 30A and WR 30B to be removed. Existing domestic water piping and sanitary piping to be cut and/or capped as per Sketch SKM-2.
  - .2 Existing exhaust fan serving WR 30A and WR 30B removed complete as per Sketch SKM-2
  - .3 Existing exhaust wall grilles to be removed as per Sketch SKM-2.
  - .4 Revise Specific Demolition Notes as per Sketch SKM-2.
  - .5 Revise location of thermostat in General Office 30 as per Sketch SKM-2.
  - .6 On Part Plan ‘A’ Renovation Drawing, extend new H-2 radiation cabinet in Classroom ‘04’ North to partition wall complete with end cap (teaching wall).

**Item 4**

- 4.0 Reference Drawing M1.3 and Attached Sketches SKM-3 to SKM-6
- .1 Existing hot and cold water piping in Storage B3 to be cut and capped as per Sketch SKM-3.
  - .2 Specific Demolition Notes to be revised as per Sketch SKM-3.
  - .3 Remove existing ductwork in Storage 13A as per Sketch SKM-4.
  - .4 Remove existing cabinet heater in Storage 13A and revise piping as per Sketch SKM-4.
  - .5 Revise sanitary piping and domestic water for new WR 14B, WR 13A and WR 13B as per Sketch SKM-5.
  - .6 Provide two EF-101 in WR 13A and WR 13B and provide exhaust ductwork as per Sketch SKM-5.
  - .7 Revise Specific Renovation Notes as per Sketch SKM-5.
  - .8 Revise “Fire Hose Cabinet Detail” as per Sketch SKM-6.
  - .9 Add “Capped Roof Curb Detail” as per Sketch SKM-6.

**ELECTRICAL****Item 1**

- 1.0 Reference Drawing E1.1
- .1 On the Light Fixture Schedule make the following edits:
    - Remove fixture types L3 and L4.
    - Add approved equals as follows:
      - Type A = Elite Cat.# HH6-LED-1500L-DIM10-120-MD-40K-85+/HH6-6501-SHZ-WH
      - Type L2- Liteline Cat.# C-LEDP-14-WH-40-120/277 complete with LEDP-MUD-14
      - Philips Cat. #1-FXP-45L-840-4-DS-UNV-DIM-FMA14

**Item 2**

- 2.0 Reference Drawings E1.1, E2.0, E3.0 and Attached Sketches SKE-2 and SKE-3
- .1 On Drawing E1.1 on the schedule for panel 'L', provide:
    - Two (2) new feeds for receptacles in Principal's Office from existing spare 15A-1P breakers.
  - .2 On Drawings E2.0 and E3.0, revise devices in WR 30A, WR 30B, and Corridor 31H as indicated on SKE-2 and SKE-3 to suit removal of both washrooms.
  - .3 On Drawing E3.0 within Learning Resource 1, delete additional raceway as per electrical Addendum 1 Item 2.1. Provide new vertical raceway and devices as per SKE-2.
  - .4 On Drawing E3.0, revise devices in Principal's Office and General Office 30/30D as per SKE-2 and SKE-3 to suit removal of washrooms.

**Item 3**

- 3.0 Reference Drawings E1.0, E2.0, E3.0, and Sketch SKE-4
- .1 On Drawing E1.0 add additional area to scope of work, Storage Room 13A is to be converted into 2 new staff washrooms.
  - .2 On Drawing E1.1, Note 1 add the following:
    - Two (2) more 20A-1P breakers and feeds for new washroom hand dryers.
    - Two (2) more 15A-1P breakers and feeds for new washroom exhaust fans (Item 6 on EWS).
  - .3 On Drawings E2.0 and E3.0 add Part Plan D for Washrooms 13A and 13B lighting/power demolition and renovation, as per SKE-4.

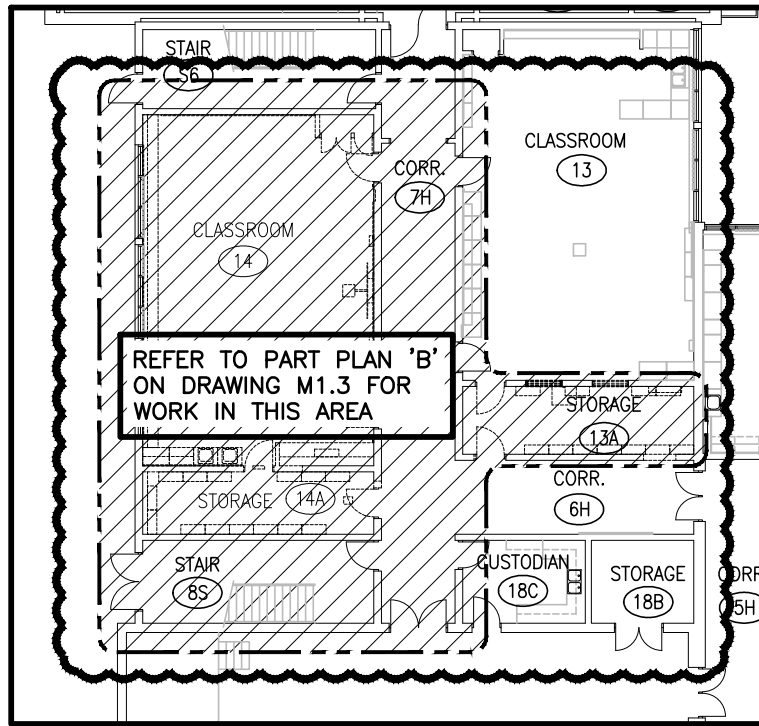
**Item 4**

- 4.0 Reference Drawings E2.0 and E3.0
- .1 On Drawing E2.0 within Classroom 04, delete combination exit/emergency fixture at exterior door (door to be removed).
  - .2 On Drawing E2.0 within Learning Resource 01, relocate classroom control panel and devices to the north side door, south door is to be removed. Revise combination exit/emergency fixture at south door to be a remote 2-head emergency fixture fed from north doors battery combination fixture.
  - .3 On Drawing E3.0 within Classroom 04, delete fire alarm pullstation at exterior door (door to be removed).
  - .4 On Drawing E3.0 within Learning Resource 01, relocate classroom control panel and associated devices to north side door. Relocate fire alarm strobe above north door to above previous south door location. Adjust panel 'L's location to east to maintain minimum access requirements. Coordinate with millwork.



Aaron Jones, B. Eng.

17244 Addendum (M&E) (SKM-1-6 & SKE-2-4) Revised Apr 5 18.docx  
md/mpd/mb/mw



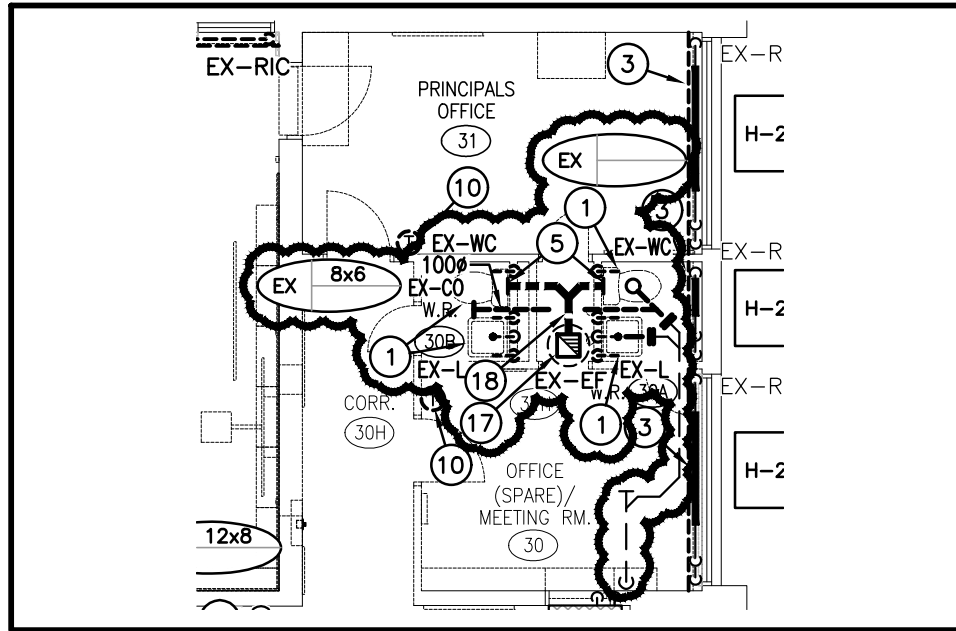
PARTIAL KEY PLAN  
SCALE: N.T.S.

## PLUMBING FIXTURE CONNECTIONS

Item	Type	Sanitary (mm)	Vent (mm)	CW (mm)	HW/TW (mm)
WC-1	FLOOR MOUNTED FLUSH TANK WATERCLOSET (ROUND FRONT) (KINDERGARTEN)	80	40	15	N/A
WC-2	FLOOR MOUNTED FLUSH VALVE WATERCLOSET	80	40	25	N/A
*L-1	WALL MOUNTED LAVATORY (KINDERGARTEN)	32	32	15	15
L-2	WALL MOUNTED LAVATORY	32	32	15	15
S-1	SINGLE COMPARTMENT STAINLESS STEEL SINK	40	32	15	N/A
*S-2	SINGLE COMPARTMENT STAINLESS STEEL SINK	40	32	15	N/A
FD-1	GENERAL DUTY FLOOR DRAIN	SEE PLAN	40	N/A	N/A

\* INSTALL PLUMBING FIXTURE AT 600mm ABOVE FINISHED FLOOR (TO RIM)

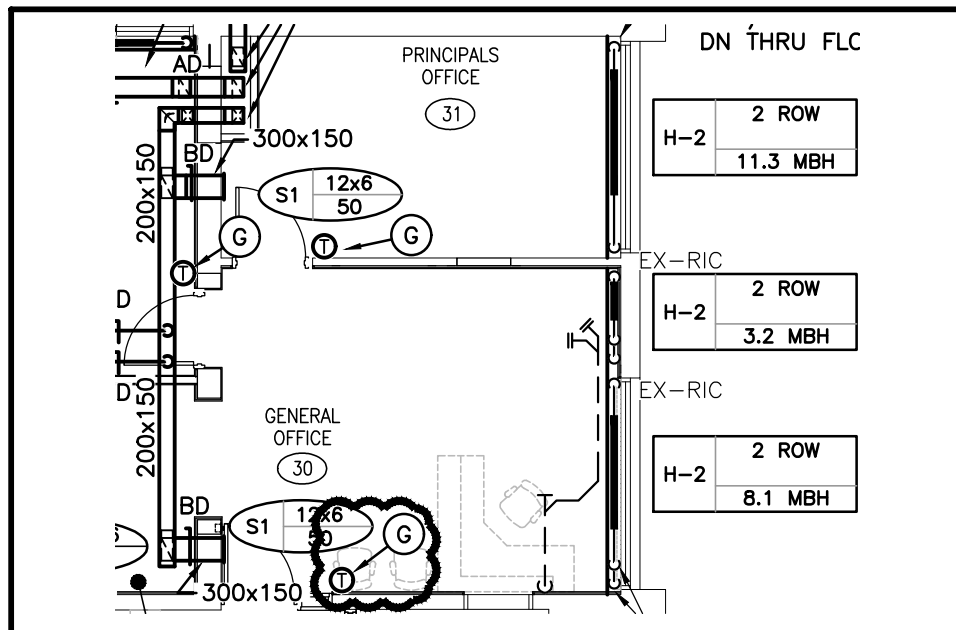
MINIMUM UNDERGROUND SANITARY LINE SIZE SHALL BE 50 $\phi$  (2"  $\phi$ )



**PARTIAL FLOOR PLAN – DEMOLITION**

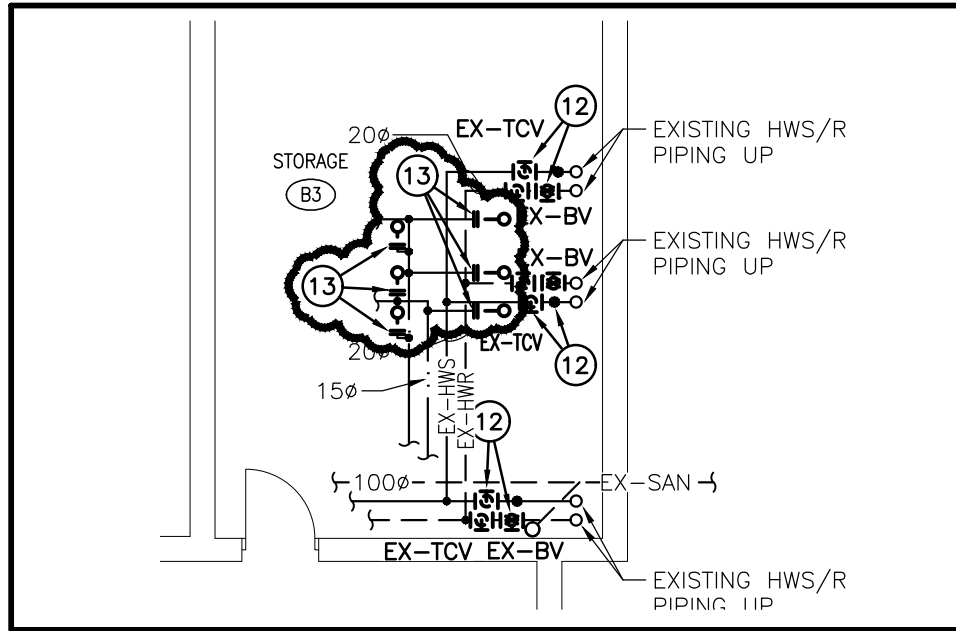
SCALE: 1/8" = 1'-0" 1:100

- 17. EXISTING EXHAUST FAN ON ROOF TO BE REMOVED COMPLETE. CAP EXISTING ROOF CURB AS PER DETAIL. CONFIRM SIZE ON SITE.
- 18. EXISTING DUCTWORK TO BE REMOVED COMPLETE.



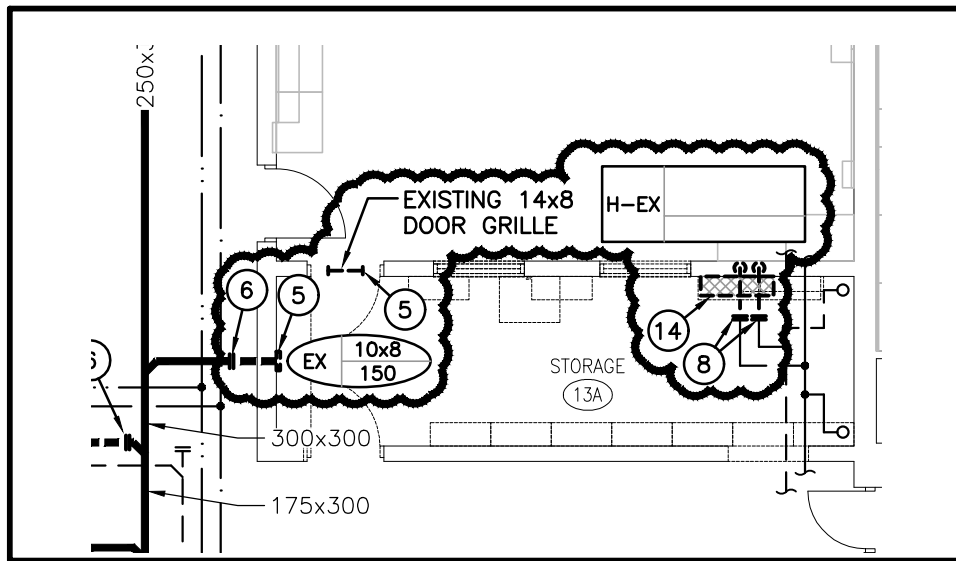
**PARTIAL FLOOR PLAN – RENOVATION**

SCALE: 1/8" = 1'-0" 1:100

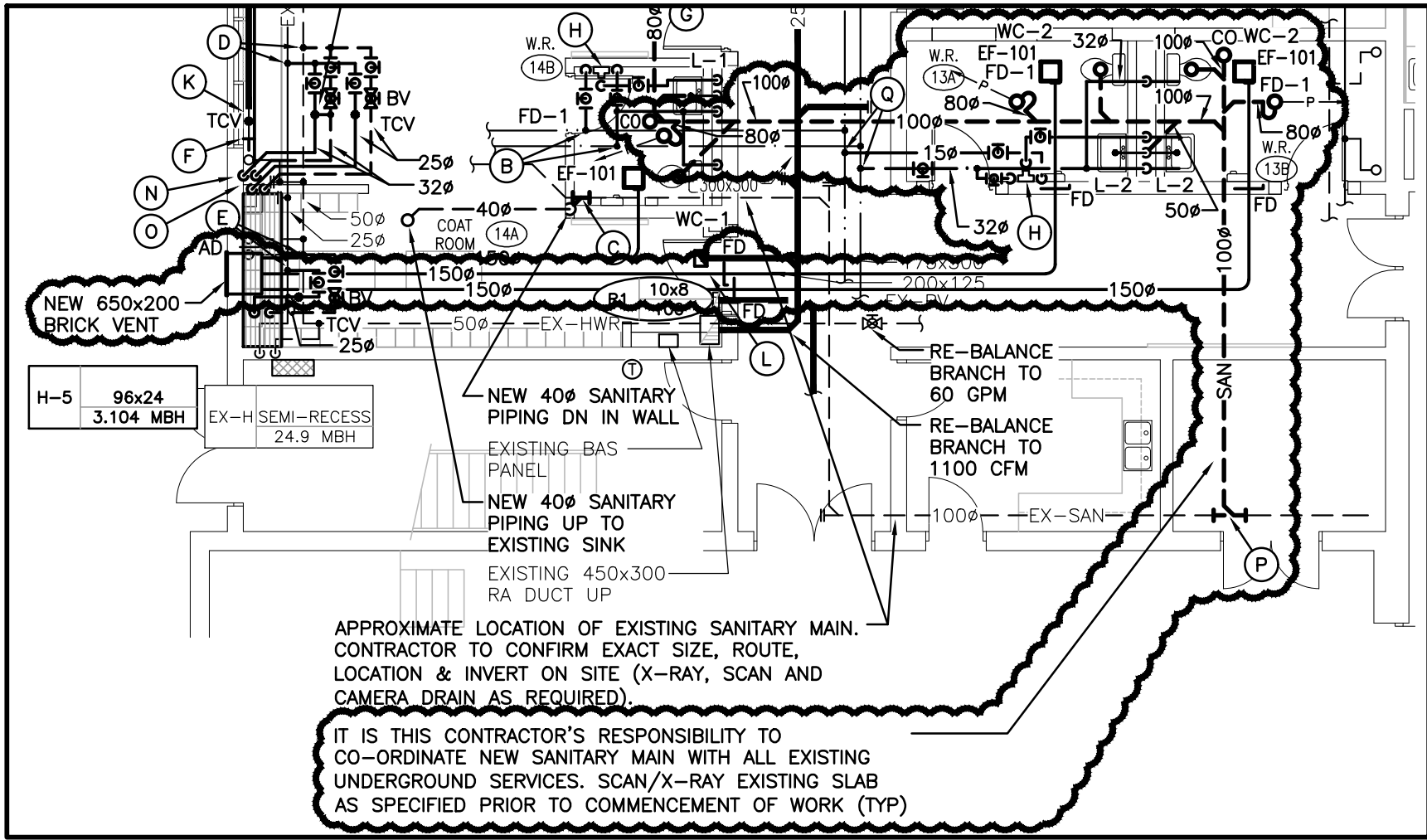


PARTIAL FLOOR PLAN – DEMOLITION  
 SCALE: 1/8" = 1'-0" 1:100

- 13. EXISTING DOMESTIC WATER TO BE CUT AND CAPPED AND REMOVED BEYOND COMPLETE.
- 14. EXISTING CABINET HEATER TO BE REMOVED BEYOND COMPLETE.



**PARTIAL FLOOR PLAN – DEMOLITION**  
 SCALE: 1/8" = 1'-0" 1:100

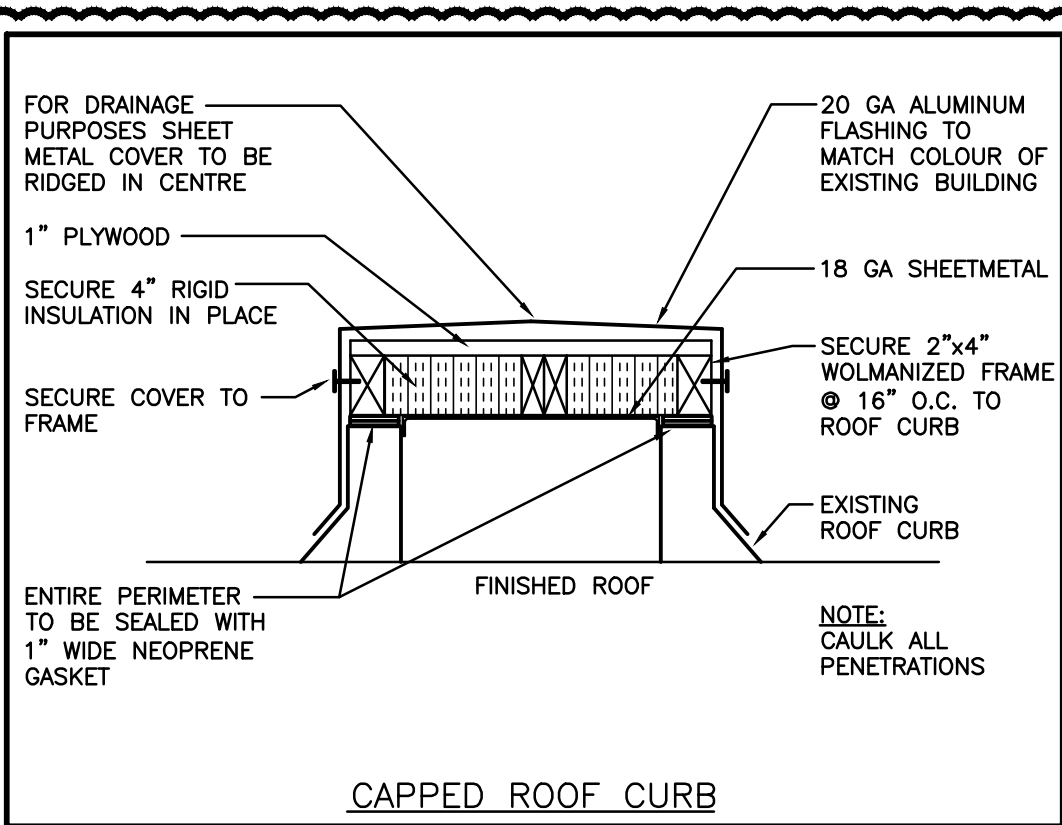


**PARTIAL FLOOR PLAN – RENOVATION**

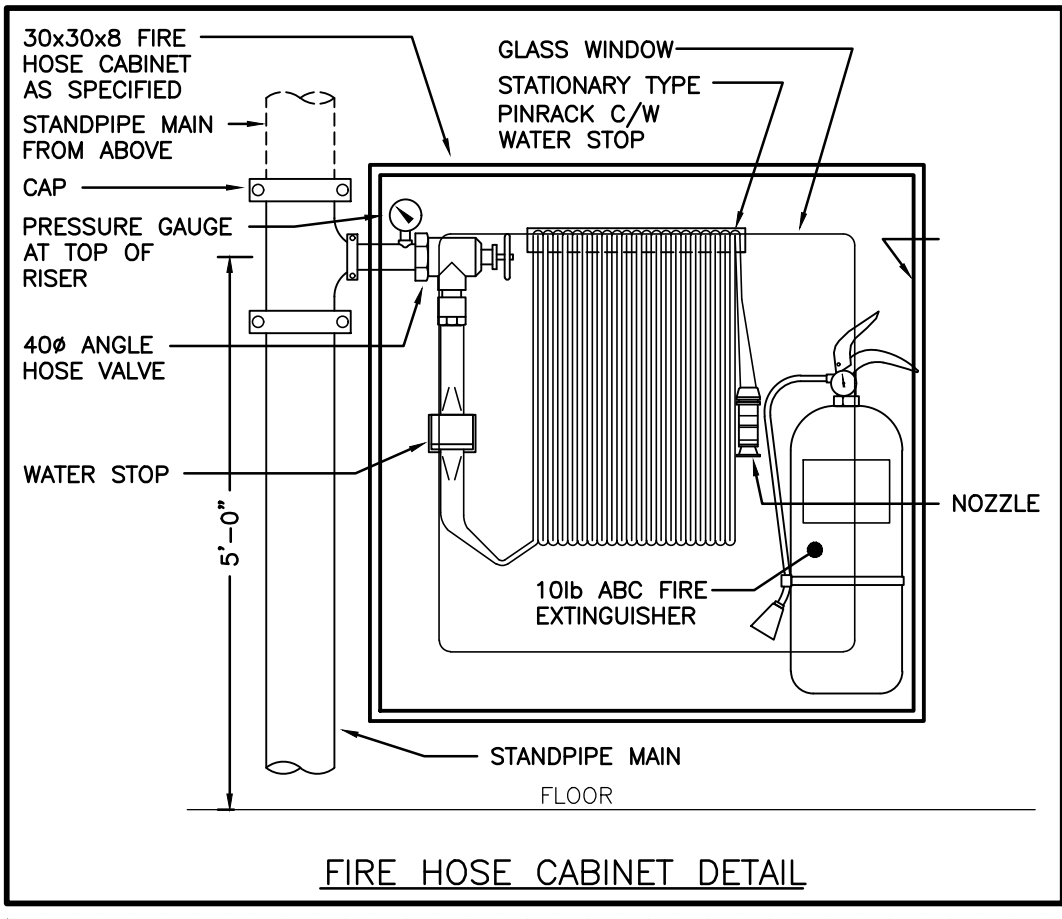
SCALE: 1/8" = 1'-0" 1:100

- P. CONNECT NEW 100Ø SANITARY PIPING TO EXISTING 100Ø SANITARY PIPING.
- Q. CONNECT NEW 15Ø HW AND 32Ø CW PIPING TO EXISTING 25Ø HW AND 40Ø CW PIPING.



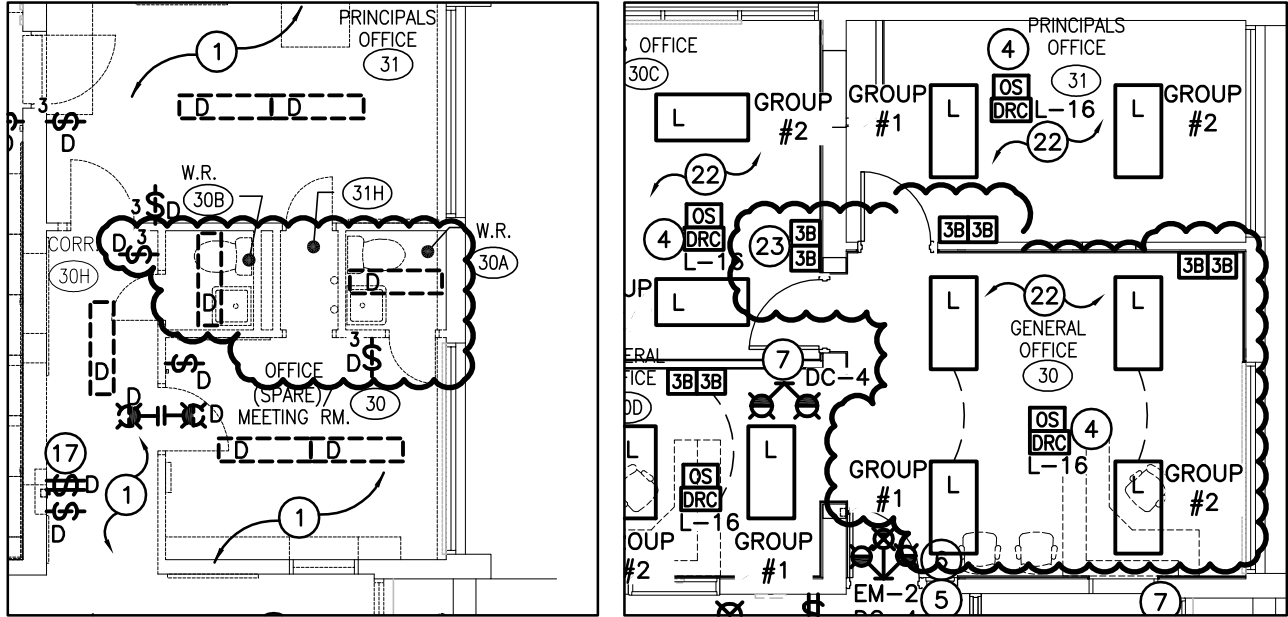


CAPPED ROOF CURB



FIRE HOSE CABINET DETAIL

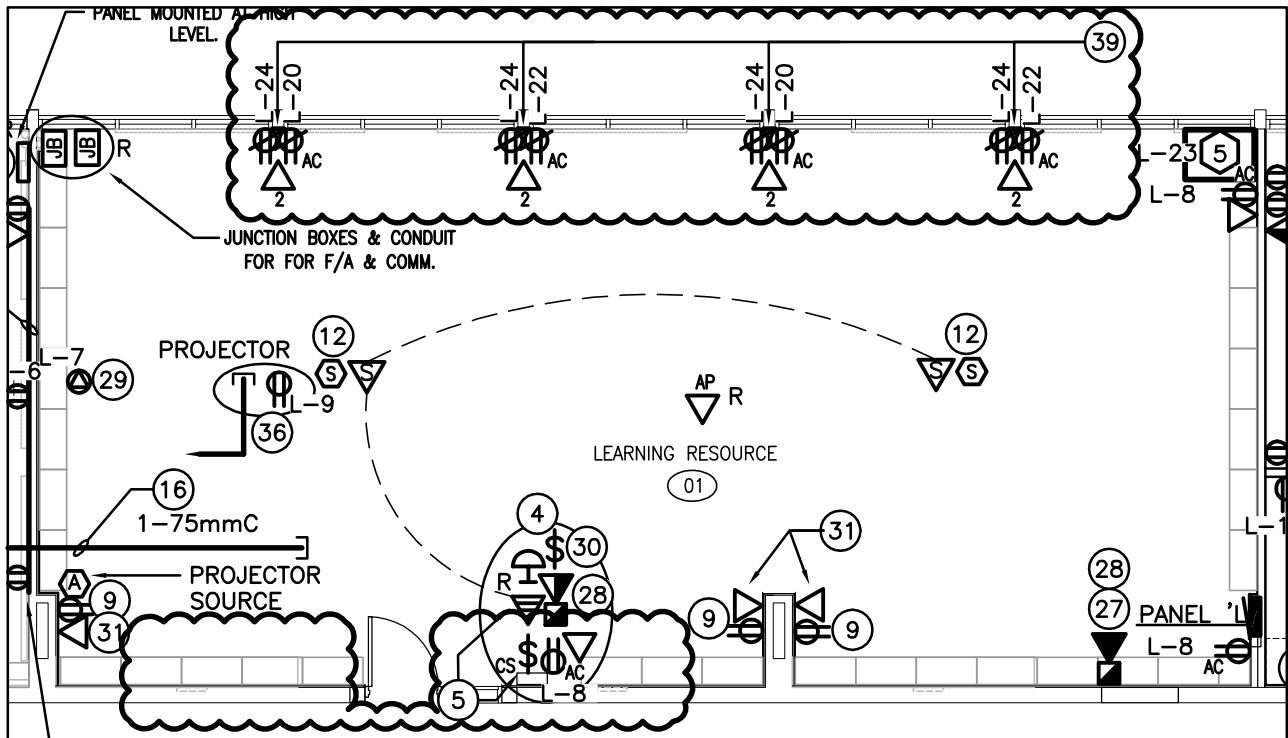
23 FISH WALL TO FEED INDICATED DEVICE AND CUT DEVICE BOX INTO WALL. IF WALL CANNOT BE FISHED, FEED INDICATED DEVICE IN NEW WALL FURRING AND CUT DEVICE BOX INTO WALL.



**A-PART PLAN LIGHTING (DEMOLITION & RENOVATION)**

SCALE: 1:100

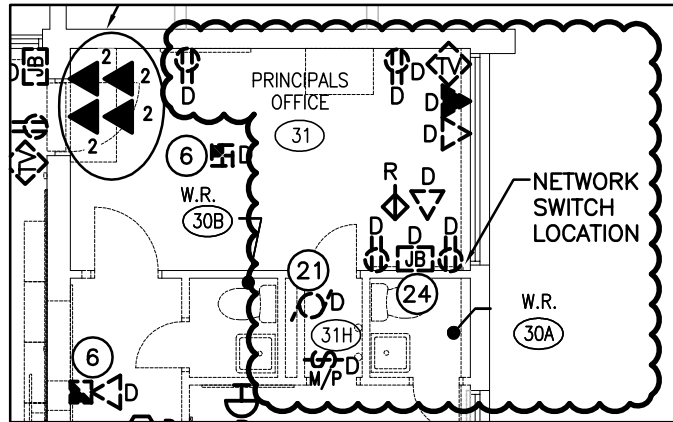
39 INDICATES TWO COMPARTMENT SURFACE MOUNTED NON-METALLIC RACEWAY MOUNTED RUN VERTICALLY DOWN WALL FROM CEILING. CO-ORDINATE EXACT LOCATION ON SITE WITH RADIATION, AT CEILING PROVIDE SERVICE ENTRANCE FITTING C/W 2-27mmC TO LOCAL ZONE CONDUIT AND 19MMC TO BRANCH CIRCUIT PANEL AS NOTED, FEED FROM NEW SUSPENDED CEILING.



**A-PART PLAN POWER AND SYSTEMS (RENOVATION)**

SCALE: 1:100

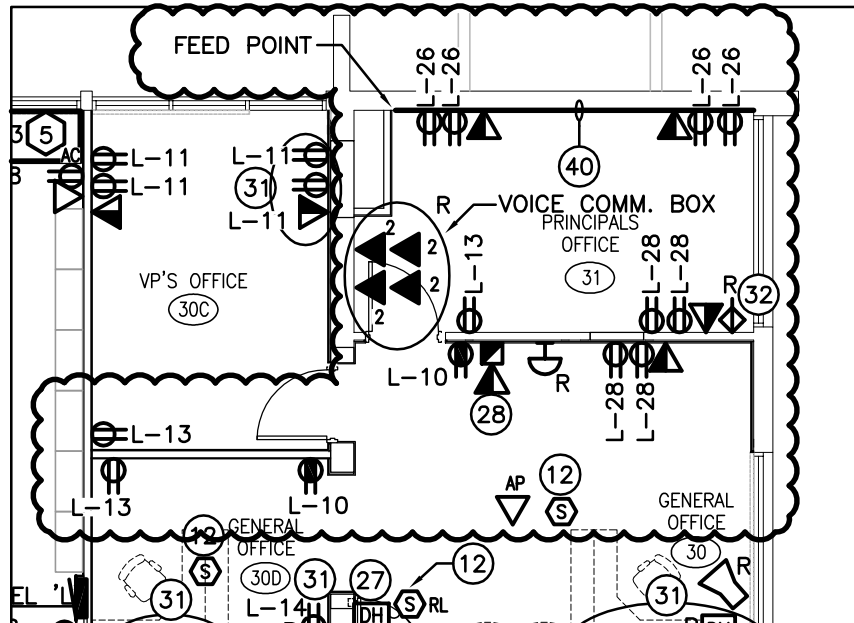
24 INDICATES OPEN JUNCTION BOX AND NETWORK SWITCH, REMOVE REDUNDANT WIRING AND CONDUIT COMPLETE, FIRE STOP ANY FLOOR PENETRATIONS AND CO-ORDINATE WITH GENERAL TRADES FOR ANY WALL PATCHING REQUIRED AND THE SELECTED VOICE/DATA CONTRACTOR FOR REMOVAL OF NETWORK SWITCH (TURN OVER TO SCHOOL BOARD REPRESENTATIVE).



### A-PART PLAN POWER AND SYSTEMS (DEMOLITION)

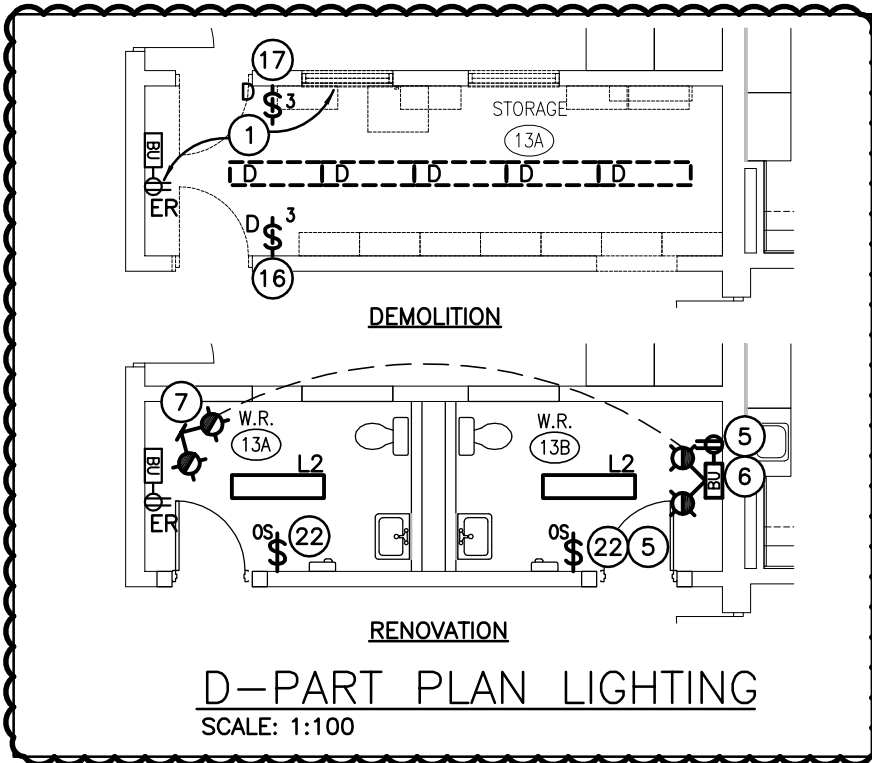
SCALE: 1:100

40 INDICATES TWO COMPARTMENT SURFACE MOUNTED NON-METALLIC RACEWAY RUN AT LOW LEVEL ALONG LENGTH OF WALL AS INDICATED. CO-ORDINATE EXACT LOCATION ON SITE WITH SCHOOL BOARD REPRESENTATIVE. FEED FROM NEW WALL CHASE AND PROVIDE SERVICE ENTRANCE FITTING C/W 2-27mmC TO LOCAL ZONE CONDUIT IN LIBRARY AND 19MMC TO BRANCH CIRCUIT PANEL AS NOTED.



### A-PART PLAN POWER AND SYSTEMS (RENOVATION)

SCALE: 1:100



42 INDICATED DEVICE IS TO BE CONNECTED TO LOCAL SIGNAL CIRCUIT. IF SIGNAL CIRCUIT CANNOT SUPPORT STROBES PROVIDE SIGNAL CIRCUIT BOOSTER AND POWER SUPPLY (FED FROM NEW PANEL C) IN LOCAL STORAGE '18B' ROOM AND FEED STROBE FROM THAT DEVICE.

